





Visibridge Provisioning Guide

VoiceObjects 9.0

To ensure that you are using the documentation that corresponds to the VoiceObjects software you are licensed to use, compare this version number with the software version shown in the Help menu of the VoiceObjects software you are using.

Copyright

Copyright © 2001-2009 VoiceObjects Germany GmbH and its licensors. All rights reserved.

Published in Germany – Legal information January 2009

Information in this document is subject to change without notice and does not represent a commitment on the part of VoiceObjects or any of its subsidiaries. The software described in this document is furnished under a license agreement or nondisclosure agreement. The software may be used or copied only in accordance with the terms of the agreement. You may not copy, use, modify, or distribute the software except as specifically allowed in the license or nondisclosure agreement. No part of this document may be reproduced or transmitted in any form or by any means, electronic or mechanical, including photocopying and recording, for any purpose, without the express written permission of VoiceObjects or a subsidiary thereof.

Protected by German and European patents. Further patents pending.

Companies, names, and dates used in examples herein are fictitious unless otherwise noted. If such names affect copyrights or trademarks or others, please notify VoiceObjects by e-mail at vo-documentation@voiceobjects.com.

Trademarks

VoiceObjects is a registered trademark of VoiceObjects Germany GmbH. Any other trademarks, trade names or service marks mentioned in this document belong to their respective owners.

The material presented herein is based upon information that we consider reliable, but we do not represent that it is error-free and complete. VoiceObjects is not making any representation or granting any warranty with respect to such material, and the distribution of such material shall not subject VoiceObjects to any liability.

Explicit Copyright Notice

The VoiceObjects software includes software developed by the Apache Software Foundation (www.apache.org). Copyright © 1999-2009 – The Apache Software Foundation. All rights reserved.

Java and all Java-related trademarks and logos are trademarks or registered trademarks of Sun Microsystems, Inc. in the U.S., other countries, or both.

Specific versions of the VoiceObjects software contain copyright material authorized by the Eclipse Foundation (www.eclipse.org), their contributors and others. All rights reserved.

Specific versions of the VoiceObjects software contain copyright material authorized to copy from Bocaloco Software LLC (www.xmlbuddy.com). All rights to such copyright material rest with Bocaloco Software.

Specific versions of the VoiceObjects software work with Microsoft Excel or make use of copyright material from Microsoft Corporation (www.microsoft.com). All rights to such copyright material rest with Microsoft. Microsoft and Excel are registered trademarks of Microsoft Corporation.

Document Number: E-031-20090604-VO9



Table of Contents

TABLE OF CONTENTS	3
VISIBRIDGE PROVISIONING GUIDE.....	4
Prerequisites.....	4
Download and Installation of Visibridge VoiceXML Gateway – Sound Card Edition.....	4
Configuring Visibridge VoiceXML Gateway – Sound Card Edition	4
Configuring Desktop for Eclipse	4
Calling your Application	6



Visibridge Provisioning Guide

The *Visibridge Provisioning Guide* describes the process of deploying and testing applications developed with VoiceObjects Desktop for Eclipse by using the Visibridge VoiceXML Gateway media platform.

If you are new to Desktop for Eclipse first follow the steps described in the *Desktop for Eclipse Quick Start Guide*. It describes how to run through the installation, provides a short introduction to the Desktop for Eclipse environment, and explains how to create a first small application.

For a more detailed description of Desktop for Eclipse refer to the *Desktop for Eclipse Guide*.

Prerequisites

To be able to call your application later on, you will need Microsoft Speech SDK 5.1 installed on your machine. This can be downloaded from here:

<http://download.microsoft.com/download/speechSDK/SDK/5.1/WXP/EN-US/speechsdk51.exe>.

To optimize the recognition quality, it is recommended to train your recognition profile. You can do so by opening the **Control Panel** and double-clicking **Speech**. From the upcoming dialog, select **Train Profile** and follow the instructions on the following pages.

Download and Installation of Visibridge VoiceXML Gateway – Sound Card Edition

To download Visibridge VoiceXML Gateway – Sound Card Edition 2.12 visit the Visibridge homepage <http://www.visibridge.com/products/products.htm>.

You can either download a 45-day evaluation version or purchase a full version.

Double-click the downloaded file to start the installation process. During the installation you will be asked to specify the installation folder.

Configuring Visibridge VoiceXML Gateway – Sound Card Edition

Next, open the configuration file *VXMLServer.ini* by doing the following:

From the Windows **Start** menu select **Programs**, then **Visibridge VoiceXML Gateway 2**, then **Sound Card Edition** and click **Configuration File**.

Navigate to the text *[Remote Access]* and change the line *Port=0* to *Port=8965*. Save and close the configuration file.

To start Visibridge, select **Programs** from the Windows **Start** menu, then **Visibridge VoiceXML Gateway 2**, then **Sound Card Edition** and click **VoiceXML Gateway**.

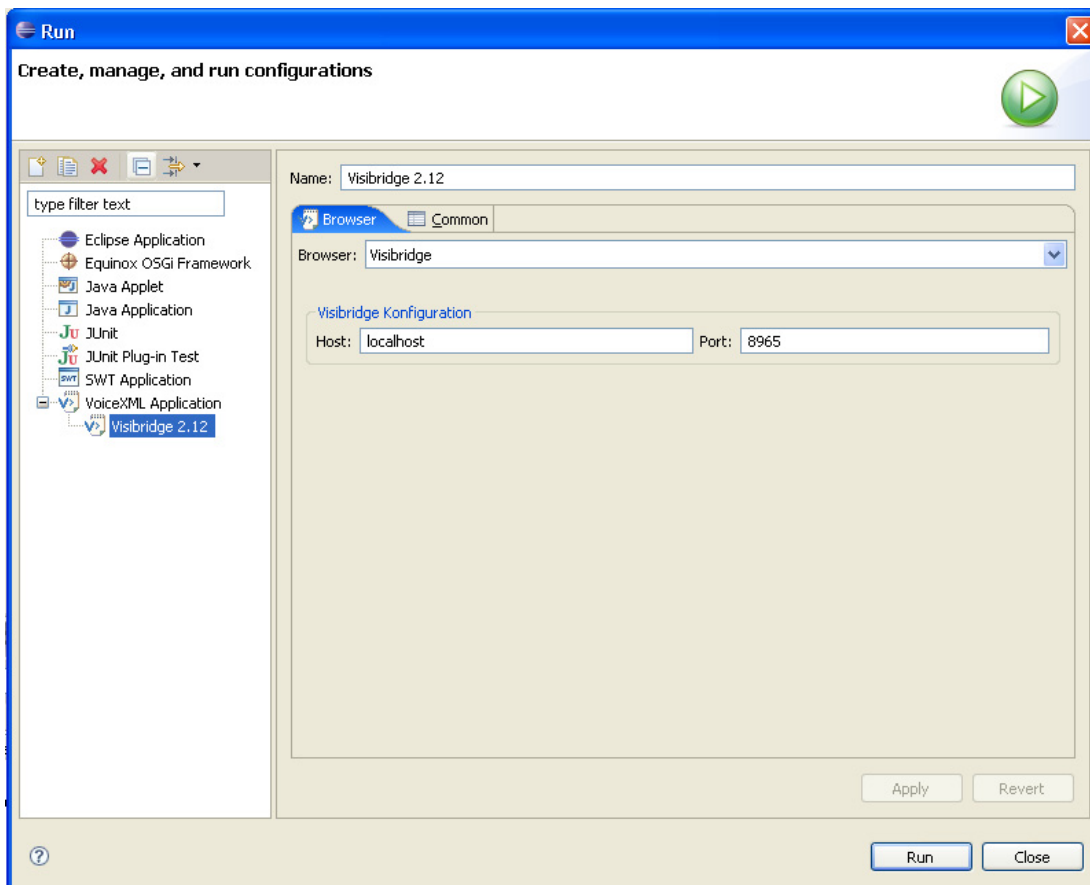
Configuring Desktop for Eclipse

Next, specify a new configuration for Visibridge in Desktop for Eclipse.

1. In the menu bar of Desktop for Eclipse, open the **Run** menu and select **Run... (Open Run Dialog...)**.
2. Right-click **VoiceXML Application** in the left pane and from the context menu select **New**.
3. In the **Name** field, specify a name for the new configuration e.g. *Visibridge*.



4. In the **Browser** field, select *Visibridge* from the drop-down list.
5. In the **Host:** field, specify *localhost*.
6. In the **Port:** field specify the complete port number you have configured in the Visibridge configuration file (default *8965*).



7. Click **Apply** to apply your settings and **Close** to leave the **Run** window.



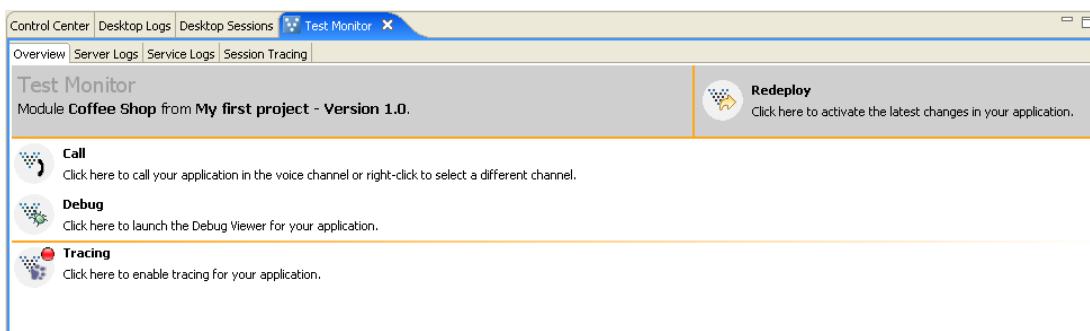
Calling your Application

Follow the instructions in the *Desktop for Eclipse Quick Start Guide* to create a small sample application with Desktop for Eclipse.

You can test this application now by doing the following:





Right-click the *Coffee Shop* Module object (or any other object you have created and want to test) and select **Test Application** from the context menu.

The **Test Monitor** will be displayed in the bottom right corner of Desktop for Eclipse.



Test your application by clicking the **Call** button  on the **Test Monitor**. Visibridge will start and automatically call your application.

The following dialog flow shows a possible dialog for the *Coffee Shop* application:

Object – Caller	Dialog Flow
	<i>Welcome to the Coffee Shop service!</i>
	<i>What would you like to drink? Mocha, Latte, or Espresso?</i>
 Caller	<i>Espresso.</i>
	<i>Here we go. Enjoy your delicious Espresso.</i>